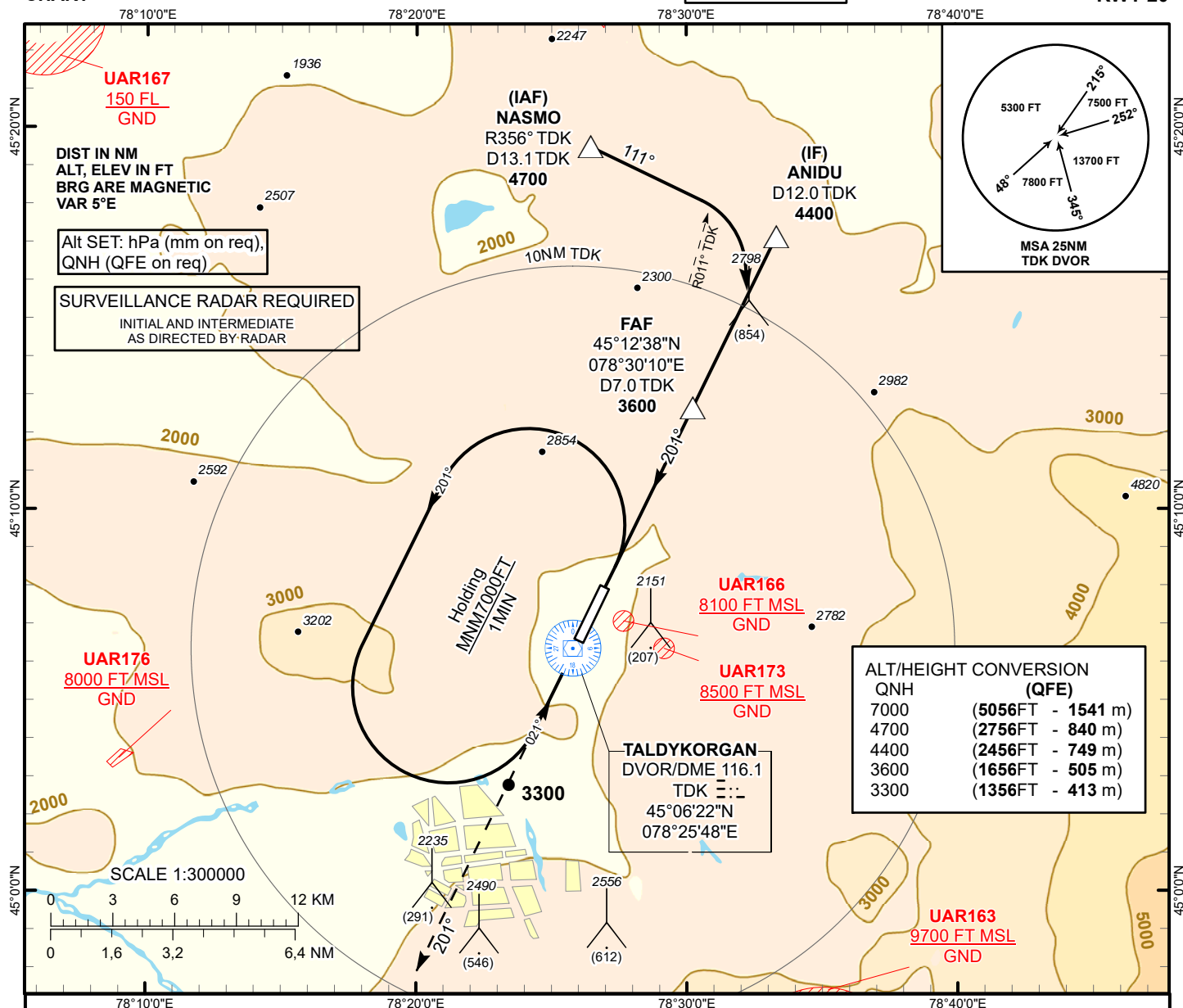
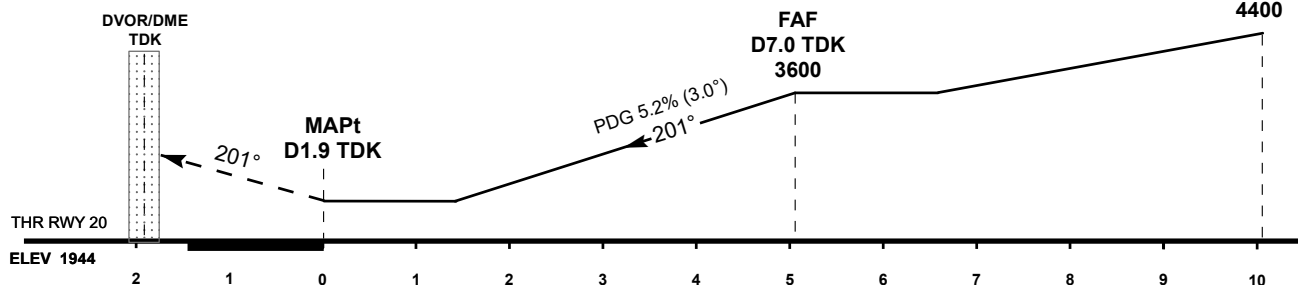


INSTRUMENT  
APPROACH  
CHARTAERODROME ELEV 1944 FT  
HEIGHTS RELATED TO  
AD ELEVTALDYKORGAN  
TOWER 127.30TALDYKORGAN  
VOR/DME Y  
RWY 20

## MISSED APPROACH

Climb on track 201° to 4700 ft.  
After passing 3300 ft radar  
vectoring will be provided.TRANSITION ALT  
10000IF  
ANIDU  
D12.0 TDK  
4400

Change: New chart.

Aircraft Category		A	B	C	D	DIST to THR	NM	1.6	2	3	4	5.1	
Straight-in Approach OCA/H						DME TDK	NM	3.5	3.9	4.9	5.9	7.0	
	VOR/DME	2500(560)	2500(560)	2500(560)	2500(560)	ALTITUDE	FT	2496	2630	2948	3267	3600	
						HEIGHT	FT	550	686	1004	1323	1656	
Aerodrome Operating Minima MDH ft x RVR(CMV)	VOR/DME												
						GS	Kt	80	100	120	140	160	180
						FAF-MAPT (5.1NM)	min:sec	3:50	3:04	2:33	2:11	1:55	1:42
						Desc.Rate( 5.2%)	ft/min	420	530	630	740	850	960

TALDYKORGAN  
VOR/DME Y

AERONAUTICAL DATA TABULATION

VOR/DME approach to RWY20 from ANIDU, NASMO	
Fix/point	Coordinates
TDK DVOR/DME	45° 06' 22.3"N 078° 25' 47.6"E
(FAF) D7.0 TDK	45° 12' 38.4"N 078° 30' 09.5"E
ANIDU (IF) D12.0 TDK	45° 17' 06.8"N 078° 33' 18.5"E
NASMO (IAF) R356° TDK D13.1 TDK	45° 19' 29.0"N 078° 26' 26.0"E
THR RWY20	45° 08' 04.99"N 078° 27' 04.28"E
Final approach descent angle is 3°	